

OVERVIEW

Centralized Management: Management of multiple arrays locally or remotely over LAN/WAN.

Storage Configuration: Complete RAID configuration functions for physical and logical storage components.

Data Service:

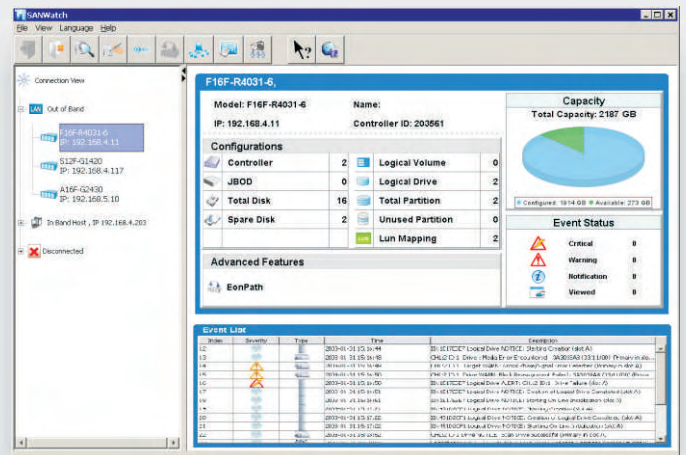
- Point-in-time, space-efficient Snapshot.
- Snapshot scheduler, disk space usage control.

Storage Monitoring:

- Multiple event notification methods
- Performance statistics in graphs
- Handy utilities such as capacity viewer and task scheduler

Multi-pathing:

- EonPath multi-pathing configuration with load-balancing.



NEW FEATURES

- Portal window for a collective view, discovery, and access to multiple arrays.
- Centrally polls statuses from multiple arrays. RAID system summary by a click away.
- Connection view of multiple RAID systems showing either in-band or out-of-band connectivity.
- EonPath multi-path device and load-balancing configuration.
- Agent-based hierarchy for one-to-many management.
- A common platform for all EonStor ASIC400 models.
- Automatically discovers RAID systems within a network.
- Export and restore system configuration profile.
- New Utilities:
Configuration Manager and **Disk Performance Monitor** (see Specialties on next page)

COMMON FEATURES

- Graphical display of physical and logical RAID system components.
- Access to all firmware functions, including logical drive creation, maintenance, and tuning of various parameters.
- Event notification via Email, Fax, SNMP traps, LAN broadcast, MSN, and SMS messaging.
- Collection of events from multiple systems to an administrator.
- Event severity, type, and order filtering.

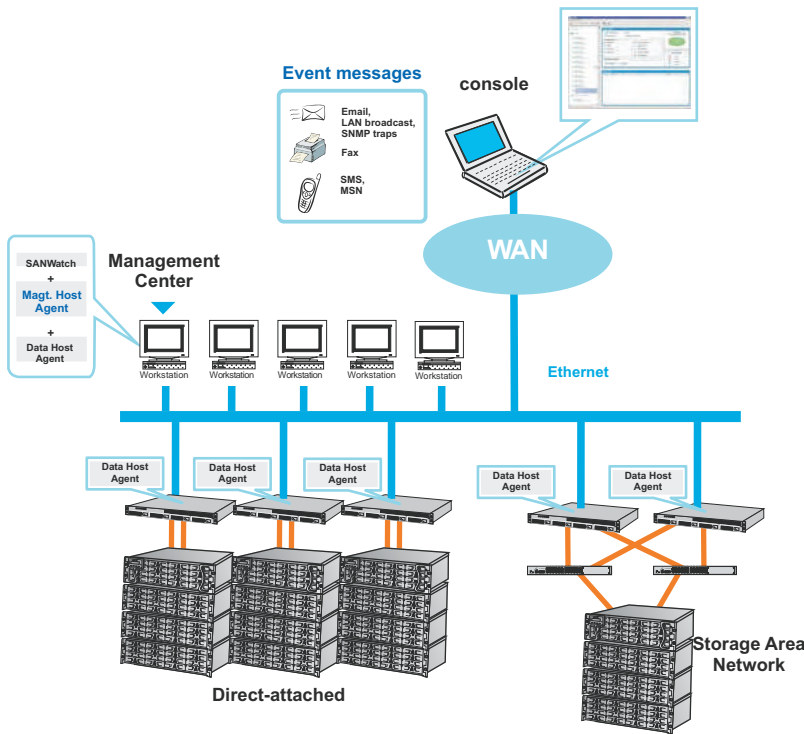
TECHNICAL BRIEF

SANWatch provides a feature-rich, yet easy to approach, Java-based GUI for Infortrend's EonStor series ASIC400 models. SANWatch includes the advanced data protection Snapshot in addition to all necessary storage administration functionality such as RAID configuration, maintenance, and monitoring - all seamlessly integrated into a platform run across any distance over the network.

SANWatch starts a common platform on which a series of data protection services, including snapshot, volume copy, replication,... will be consolidated. These data protection measures will ensure availability of data from harm of human/software errors, facilitate backup or recovery, and improve efficiency managing large data pools.

SANWatch features an SSL (Secure Socket Layer) link protection and role-based access levels for management carried out on different installation sites and for different purposes. An administrator can also develop groups of managed systems in related to their geographical or functional relationships.

SANWatch comes free with product packages and the license for additional software packages is separately purchased and activated.

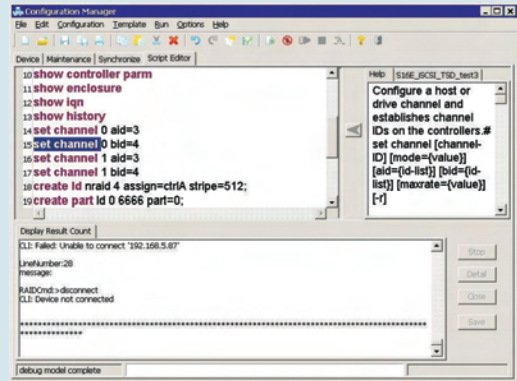


Event messages

- Email, LAN Broadcast, SNMP traps
- Fax
- SMS, MSN

SPECIALTIES

- Redundant instances of SANWatch to eliminate service blind time
- Plug-in support for special emailing or dial-out purposes
- Capacity and LUN mapping at a glance for minimized administration effort
- **Configuration Manager:** command line IP script to multiple systems; synchronization with time server



- **Disk Performance Manager:** discovers individual defective HDD members that drag performance

OPERATING SYSTEM COMPATIBILITY:

OS		SANWatch		Data Service: Snapshot	EonPath Support	
		Management				
		* Out-of band	* In-band			
Microsoft	Server	Win 2008 (32/64) Enterprise	Yes	Yes	Yes	Yes
		Win 2003 (32/64) R2 Sp2	Yes	Yes	Yes	Yes
	Client	Win XP Sp2	Yes	-	-	-
		Vista Ultimate	Yes	-	-	-
**Linux	RedHat	RedHat AS 4 U4 (32), 2.6.9-42/2.6.9-5	Yes	Yes	Yes	Yes
		RedHat AS 4 U4 (64), 2.6.9-42/2.6.9-5	Yes	Yes	Yes	Yes
	SuSE	Linux SuSE SLES v9.1 Sp3 (64), 2.6.5-7.97	Yes	Yes	Yes	Yes
		Linux SuSE SLES v10 (32), 2.6.16.21-0.8	Yes	Yes	Yes	Yes
		Linux SuSE SLES v10 (64), 2.6.16.21-0.8	Yes	Yes	Yes	Yes
Sun Solaris	Solaris 10 Sparc	Yes	Yes	Yes	Yes	
Apple Mac OS	Mac OS X 10.4.x & 10.5.x	Yes	-	-	-	

* **Out-of band** includes Ethernet access to a RAID system firmware directly via its Ethernet port or the access via the "Data Host agent" on a DAS/SAN data server and then to the RAID firmware.